

AENC-TQST-LAN-DWG-0002

Norwich to Tilbury

Volume 2: Plans, Drawings and Sections

Document: 2.2 Land Plans - Section E

Final Issue D

June 2026

Planning Inspectorate Reference: EN020027

Infrastructure Planning (Applications: Prescribed Forms and Procedure)
Regulations 2009 Regulation 5(2)(i)(i)-(iii)

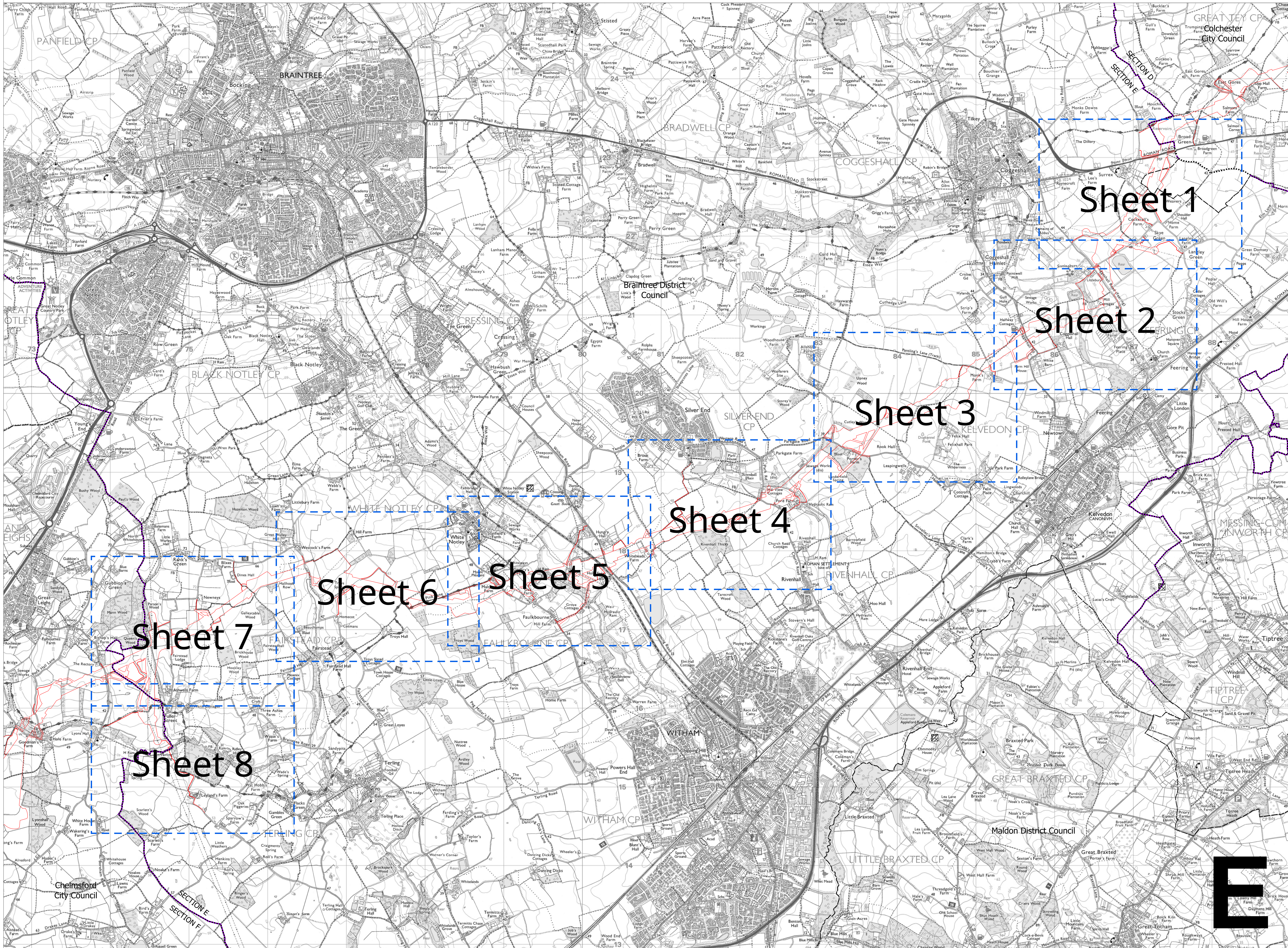
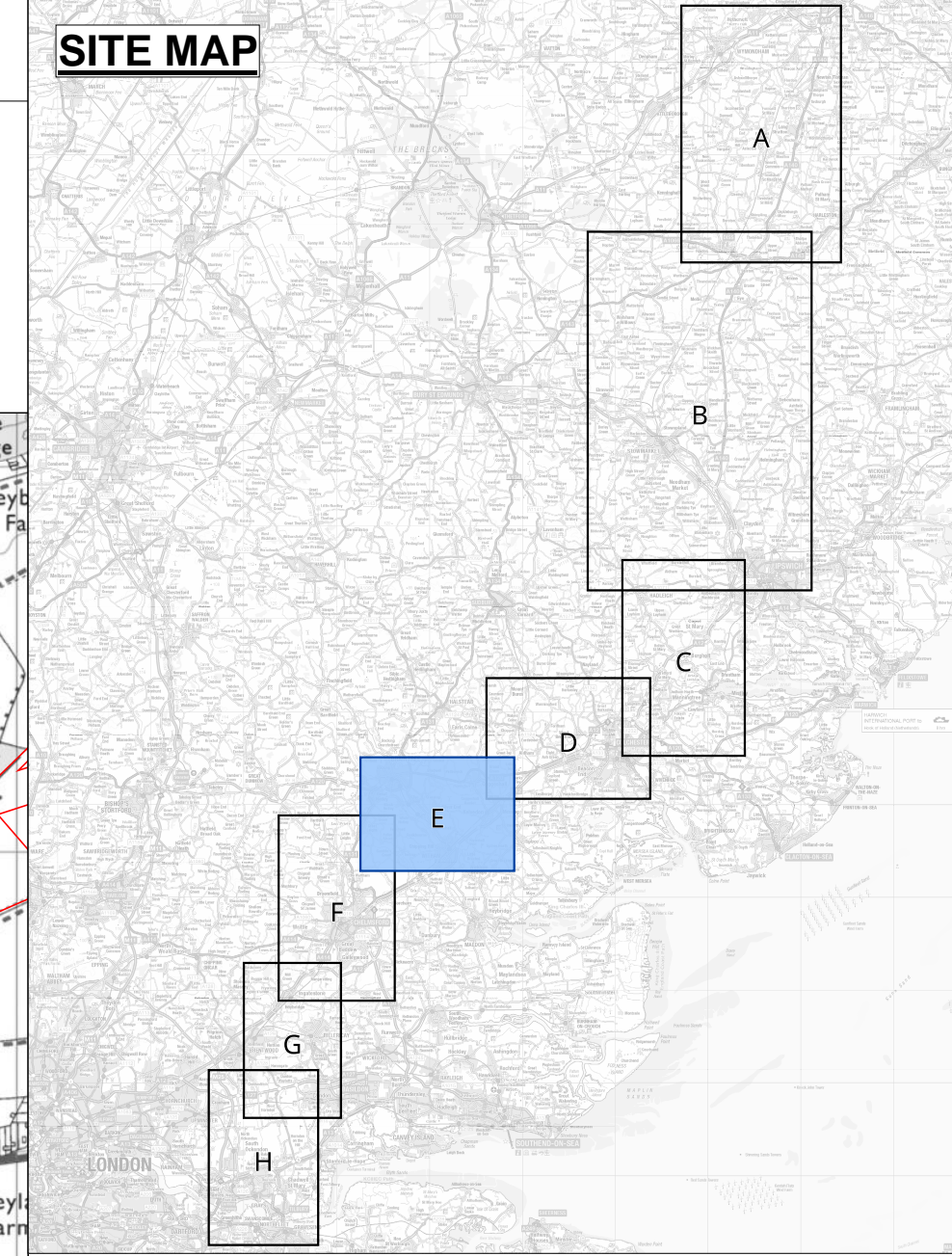
nationalgrid



THE NATIONAL GRID (NORWICH TO TILBURY) ORDER
 LAND PLANS KEY PLAN
 REGULATION 5(2)(i)-(iii)
 SECTION E (SHEET 1 OF 1,
 BRAINTREE DISTRICT COUNCIL, COLCHESTER CITY COUNCIL AND CHELMSFORD CITY COUNCIL)

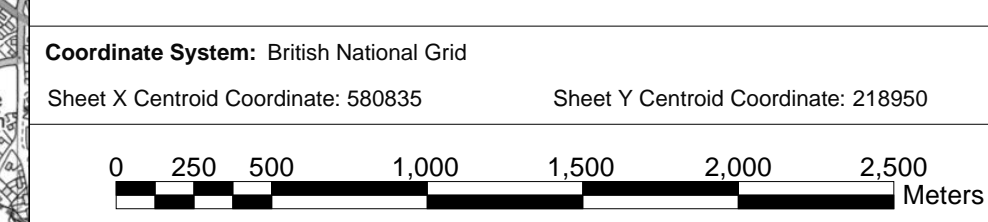
Application Document 2.2

SITE MAP



- Legend**
- Local authority boundary
 - Section boundary & local authority boundary
 - Section boundary
 - Sheet index
 - Order Limits

- Notes**
1. For additional detail on the plan suites, please refer to the Guide to Plans (document reference 2.0), located in the Volume 2 of the DCO application.
 2. This drawing is scaled at paper size A0, therefore any prints taken at smaller sizes will affect accuracy of the measurement units and should not be scaled against.



BACKGROUND MAPPING INFORMATION HAS BEEN REPRODUCED FROM THE ORDNANCE SURVEY BY PERMISSION OF ORDNANCE SURVEY OF THE CONTROLLER OF HIS MAJESTY'S STATIONERY OFFICE. © CROWN COPYRIGHT AND DATABASE RIGHTS (2025) LICENCE OS100024241 AND AC000807948.

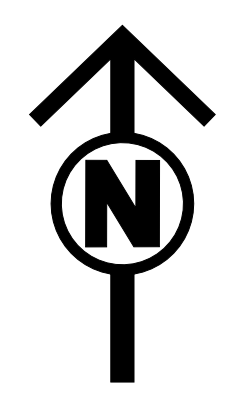
Issue	Date	Remarks	Drawn	Checked	Approved
D	JUN-2026	For deadline five	CLJ	RCA	KPA
C	MAY-2026	For deadline four	CLJ	RCA	KPA
B	OCT-2025	October 2025 Update	CLJ	KPA	TPR
A	AUG-2025	For DCO Submission	CLJ	KPA	TPR

Title: THE NATIONAL GRID (NORWICH TO TILBURY) ORDER LAND PLANS KEY PLAN REGULATION 5(2)(i)-(iii) SECTION E (SHEET 1 OF 1) BRAINTREE DISTRICT COUNCIL, COLCHESTER CITY COUNCIL AND CHELMSFORD CITY COUNCIL

nationalgrid

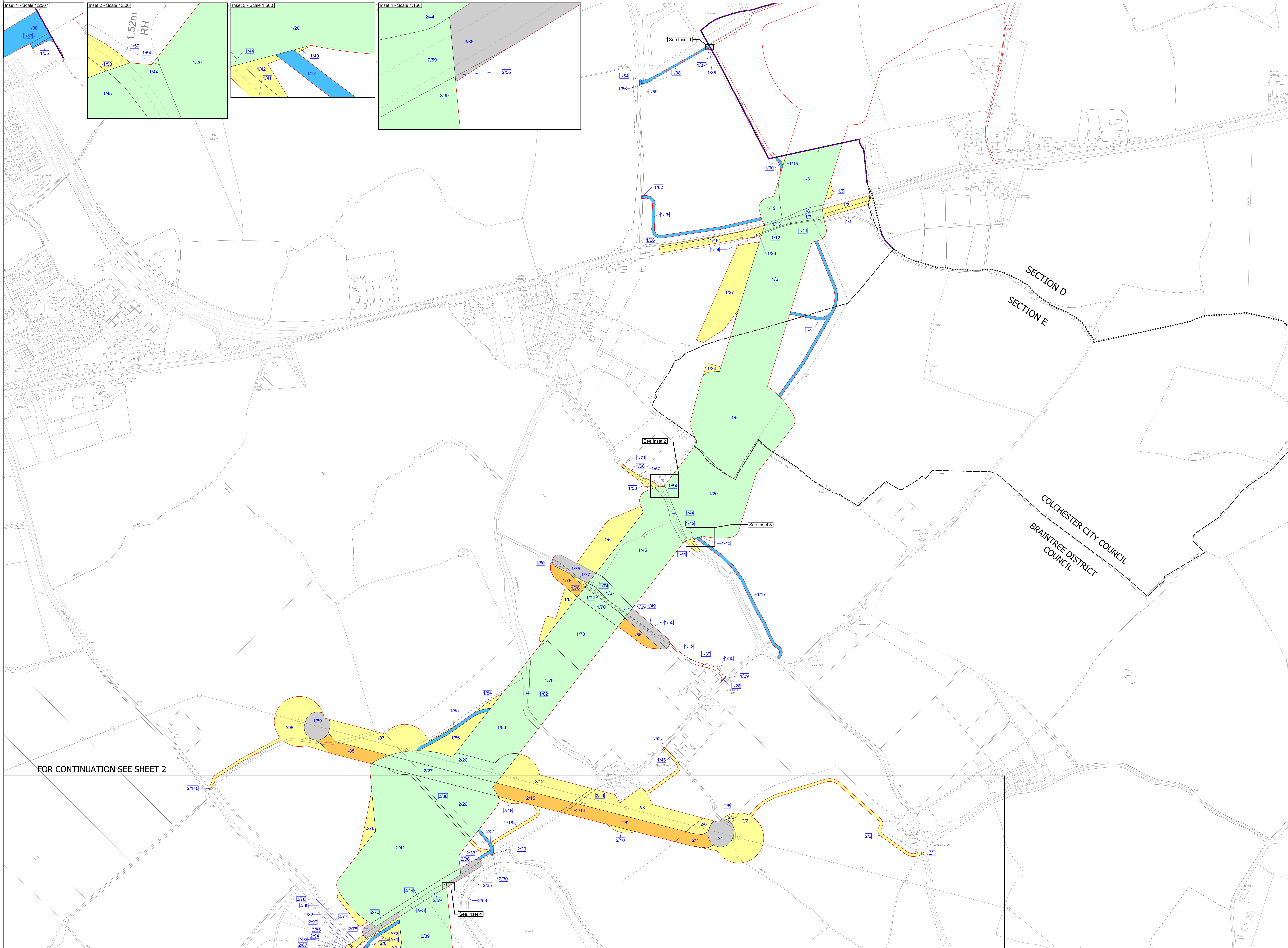
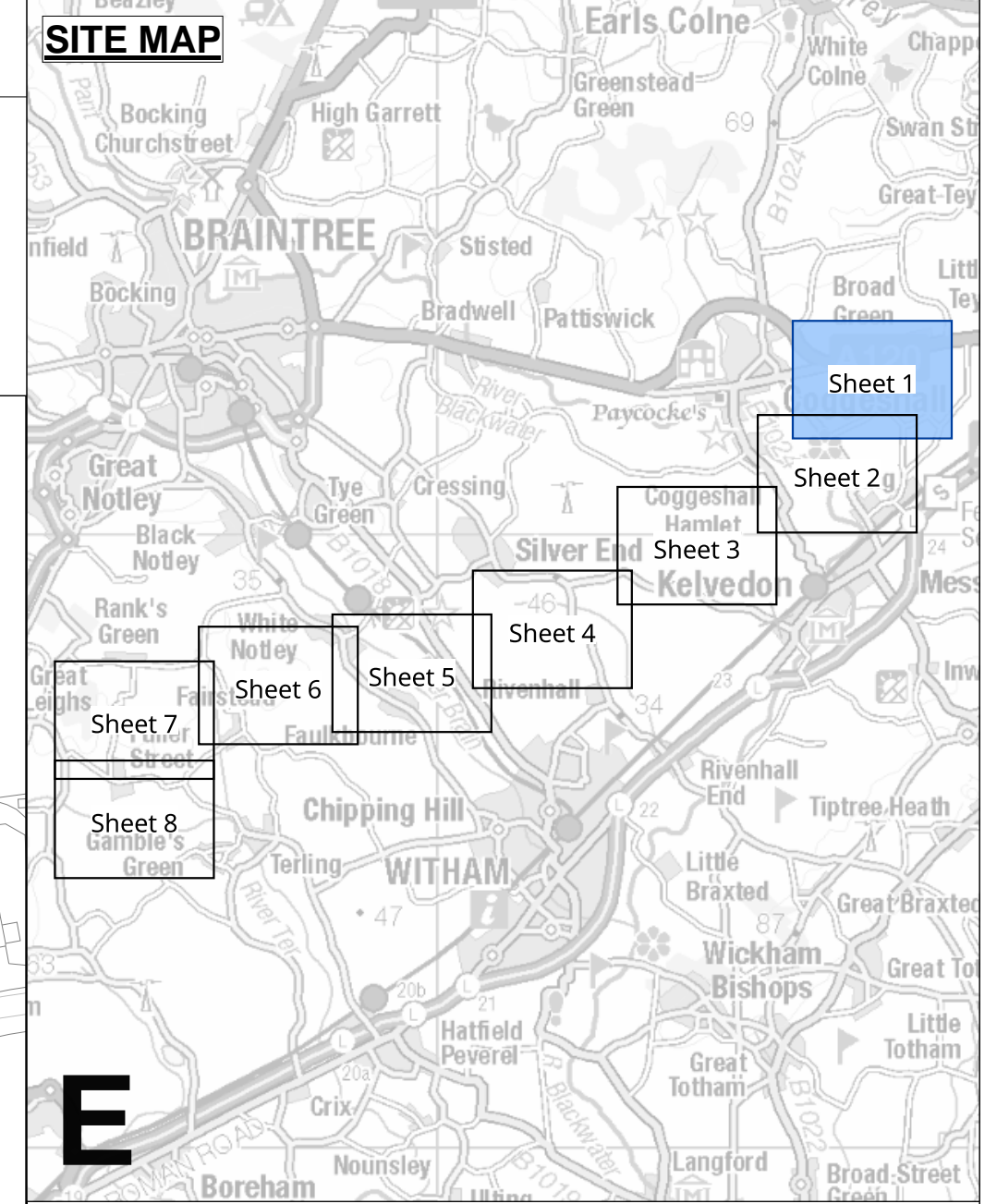
PINS Application Number: EN020027
 National Grid Drawing Reference: AENC-TQST-LAN-DWG-0002

Scale	Sheet Size	Sheet	Issue
1:16,000	A0	SHEET 1 of 1	D



THE NATIONAL GRID (NORWICH TO TILBURY) ORDER
 LAND PLANS
 REGULATION 5(2)(i)-(iii)
 SECTION E (SHEET 1 OF 8,
 COLCHESTER CITY COUNCIL AND BRAINTREE DISTRICT COUNCIL)

Application Document 2.2



Legend

- Local authority boundary
- Section boundary & local authority boundary
- Section boundary
- Sheet index outlines
- Order Limits
- Class 1 - Compulsory acquisition of land
- Class 2 - Compulsory acquisition of rights - Overhead line
- Class 3 - Compulsory acquisition of rights - Underground cable system
- Class 4 - Compulsory acquisition of rights - Overhead line and underground cable system
- Class 4A - Compulsory Acquisition of Rights - Works for the protection of existing UKOP apparatus affected by the authorised development
- Class 5 - Compulsory acquisition of rights - Access
- Class 6 - Compulsory acquisition of rights - Drainage
- Class 7 - Temporary use
- Class 8 - Land not subject to powers of acquisition nor temporary use

Notes

1. For additional detail on the plan suites, please refer to the Guide to Plans (document reference 2.0), located in the Volume 2 of the DCO application.

2. This drawing is scaled at paper size A0, therefore any prints taken at smaller sizes will affect accuracy of the measurement units and should not be scaled against.

Coordinate System: British National Grid
 Sheet X Centroid Coordinate: 587091 Sheet Y Centroid Coordinate: 222537

BACKGROUND MAPPING INFORMATION HAS BEEN REPRODUCED FROM THE ORDNANCE SURVEY BY PERMISSION OF ORDNANCE SURVEY OF THE CONTROLLER OF HIS MAJESTY'S STATIONERY OFFICE. © CROWN COPYRIGHT AND DATABASE RIGHTS (2025) LICENCE OS100024241 AND AC0000807948.

Issue	Date	Remarks	Drawn	Checked	Approved
D	JUN-2026	For deadline five	CLJ	RCA	KPA
C	MAY-2026	For deadline four	CLJ	RCA	KPA
B	OCT-2025	October 2025 Update	FMA	AMI	CLJ
A	AUG-2025	For DCO Submission	BBU	KGA	CLJ

Title:
 THE NATIONAL GRID (NORWICH TO TILBURY) ORDER
 LAND PLANS
 REGULATION 5(2)(i)-(iii)
 SECTION E (SHEET 1 OF 8
 COLCHESTER CITY COUNCIL
 AND BRAINTREE DISTRICT COUNCIL)

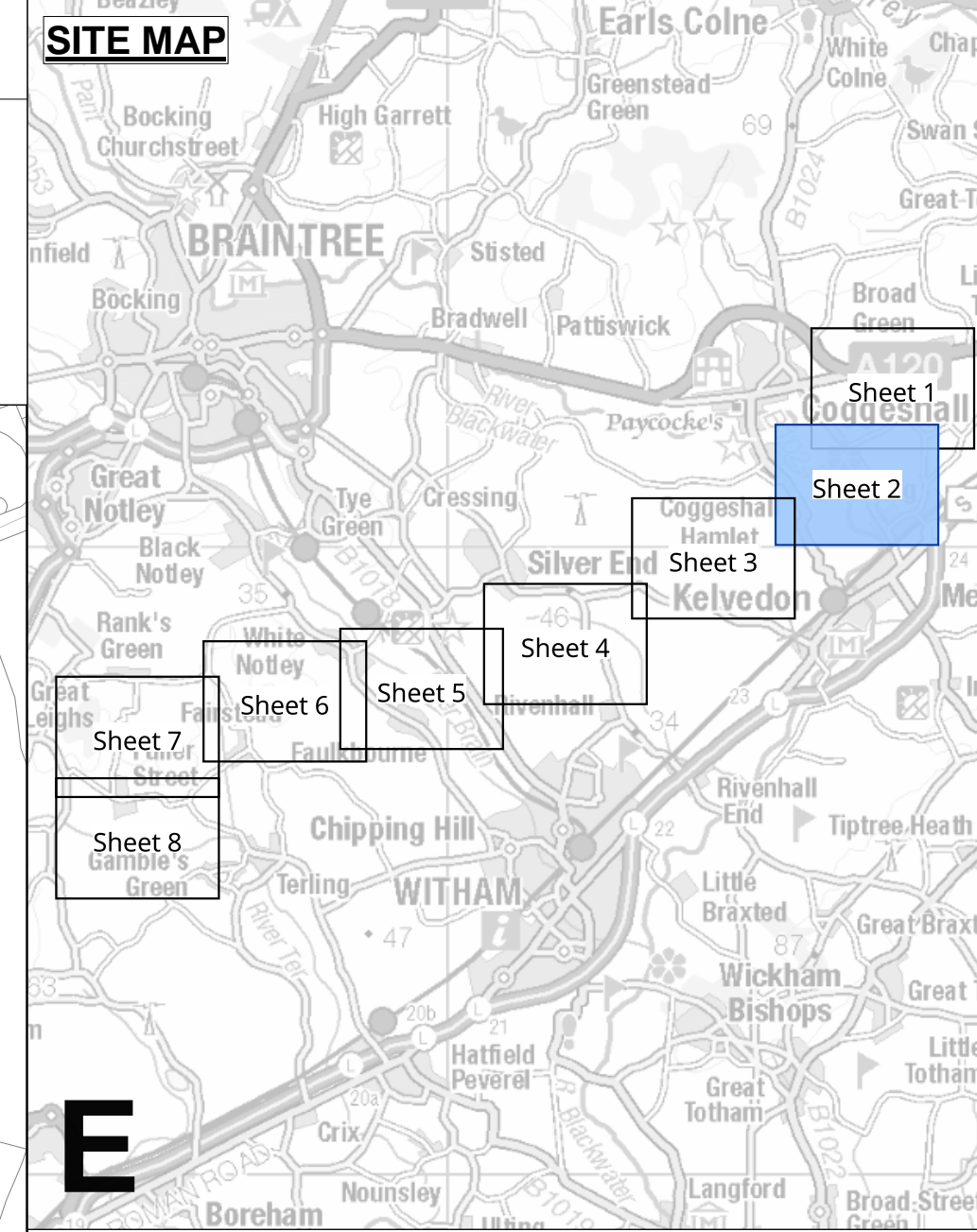
nationalgrid			
PINS Application Number		EN020027	
National Grid Drawing Reference			
AENC-TQST-LAN-DWG-0002			
Scale	Sheet Size	Sheet	Issue
1:2,500	A0	SHEET 1 of 8	D

FOR CONTINUATION SEE SHEET 2



THE NATIONAL GRID (NORWICH TO TILBURY) ORDER
 LAND PLANS
 REGULATION 5(2)(i)-(iii)
 SECTION E (SHEET 2 OF 8,
 BRAINTREE DISTRICT COUNCIL)

Application Document 2.2



- Legend**
- Local authority boundary
 - Section boundary & local authority boundary
 - Section boundary
 - Sheet index cutlines
 - Order Limits
 - Class 1 - Compulsory acquisition of land
 - Class 2 - Compulsory acquisition of rights - Overhead line
 - Class 3 - Compulsory acquisition of rights - Underground cable system
 - Class 4 - Compulsory acquisition of rights - Overhead line and underground cable system
 - Class 4A - Compulsory Acquisition of Rights - Works for the protection of existing UKOP apparatus affected by the authorised development
 - Class 5 - Compulsory acquisition of rights - Access
 - Class 6 - Compulsory acquisition of rights - Drainage
 - Class 7 - Temporary use
 - Class 8 - Land not subject to powers of acquisition nor temporary use

Notes

- For additional detail on the plan suites, please refer to the Guide to Plans (document reference 2.0), located in the Volume 2 of the DCO application.
- This drawing is scaled at paper size A0, therefore any prints taken at smaller sizes will affect accuracy of the measurement units and should not be scaled against.

Coordinate System: British National Grid
 Sheet X Centroid Coordinate: 58519 Sheet Y Centroid Coordinate: 221000

BACKGROUND MAPPING INFORMATION HAS BEEN REPRODUCED FROM THE ORDNANCE SURVEY BY PERMISSION OF ORDNANCE SURVEY OF THE CONTROLLER OF HIS MAJESTY'S STATIONERY OFFICE. © CROWN COPYRIGHT AND DATABASE RIGHTS (2025) LICENCE OS100024241 AND AC0000807948.

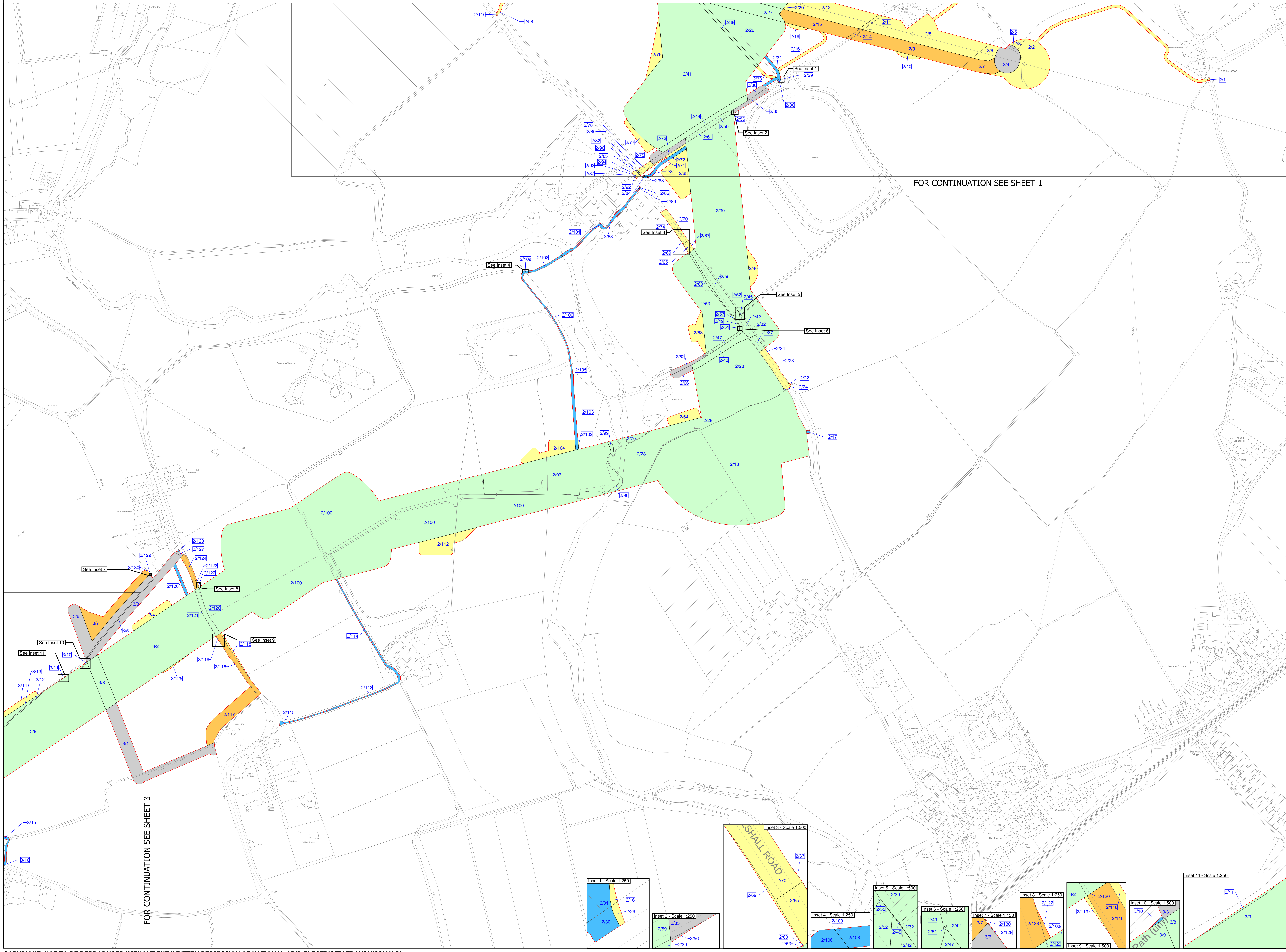
Issue	Date	Remarks	Drawn	Checked	Approved
D	JUN-2026	For deadline five	CLJ	RCA	KPA
C	MAY-2026	For deadline four	CLJ	RCA	KPA
B	OCT-2025	October 2025 Update	BBU	AMI	CLJ
A	AUG-2025	For DCO Submission	BBU	CBE	CLJ

Title:
 THE NATIONAL GRID (NORWICH TO TILBURY) ORDER
 LAND PLANS
 REGULATION 5(2)(i)-(iii)
 SECTION E (SHEET 2 OF 8
 BRAINTREE DISTRICT COUNCIL)

nationalgrid

PINS Application Number: EN020027
 National Grid Drawing Reference: AENC-TQST-LAN-DWG-0002

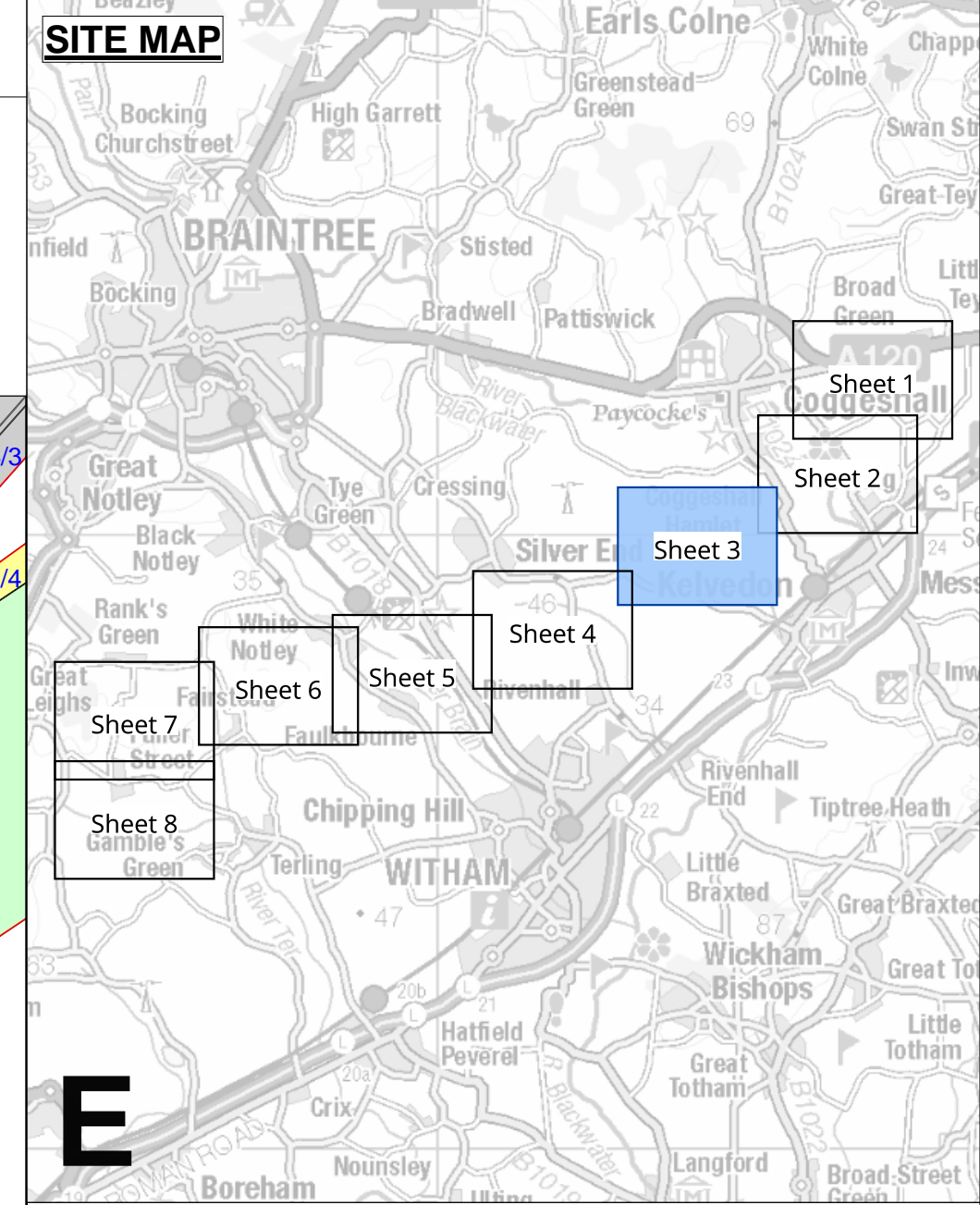
Scale	Sheet Size	Sheet	Issue
1:2,500	A0	SHEET 2 of 8	D





THE NATIONAL GRID (NORWICH TO TILBURY) ORDER
 LAND PLANS
 REGULATION 5(2)(i)-(iii)
 SECTION E (SHEET 3 OF 8,
 BRAINTREE DISTRICT COUNCIL)

Application Document 2.2



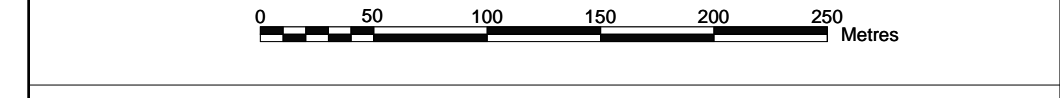
Legend

- Local authority boundary
- Section boundary & local authority boundary
- Section boundary
- Sheet index cutlines
- Order Limits
- Class 1 - Compulsory acquisition of land
- Class 2 - Compulsory acquisition of rights - Overhead line
- Class 3 - Compulsory acquisition of rights - Underground cable system
- Class 4 - Compulsory acquisition of rights - Overhead line and underground cable system
- Class 4A - Compulsory Acquisition of Rights - Works for the protection of existing UKOP apparatus affected by the authorised development
- Class 5 - Compulsory acquisition of rights - Access
- Class 6 - Compulsory acquisition of rights - Drainage
- Class 7 - Temporary use
- Class 8 - Land not subject to powers of acquisition nor temporary use

Notes

- For additional detail on the plan suites, please refer to the Guide to Plans (document reference 2.0), located in the Volume 2 of the DCO application.
- This drawing is scaled at paper size A0, therefore any prints taken at smaller sizes will affect accuracy of the measurement units and should not be scaled against.

Coordinate System: British National Grid
 Sheet X Centroid Coordinate: 584231 Sheet Y Centroid Coordinate: 219826

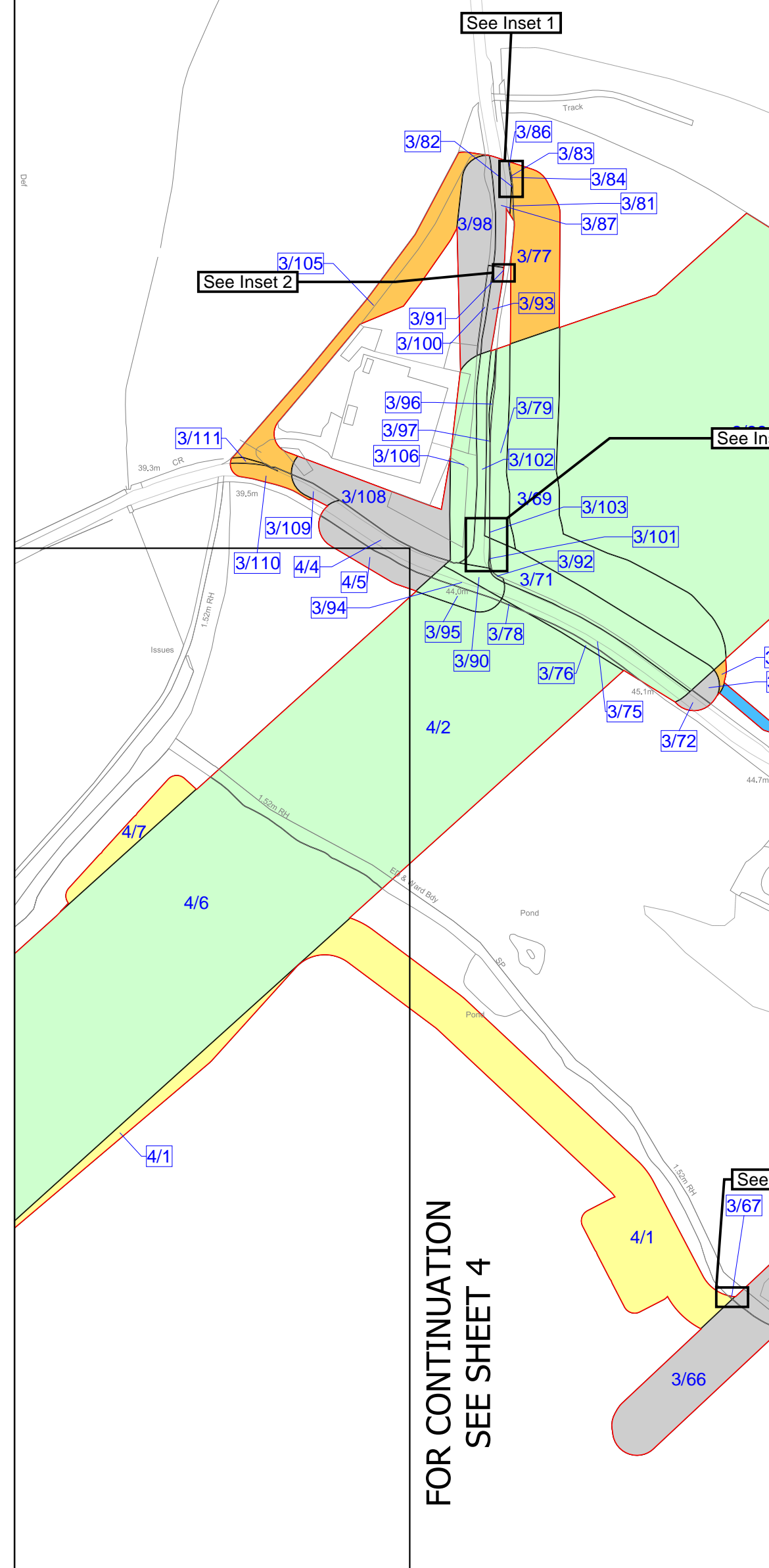
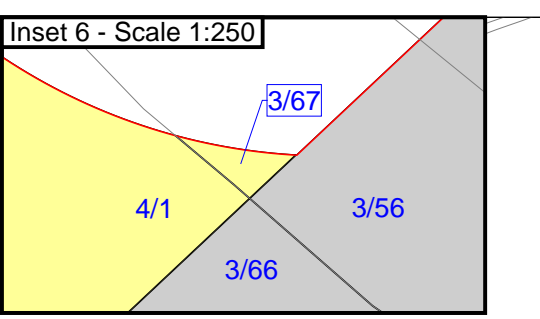
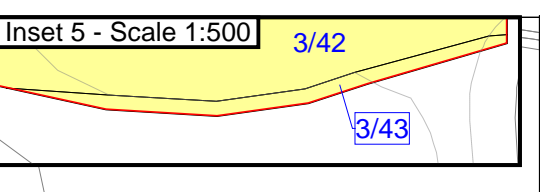
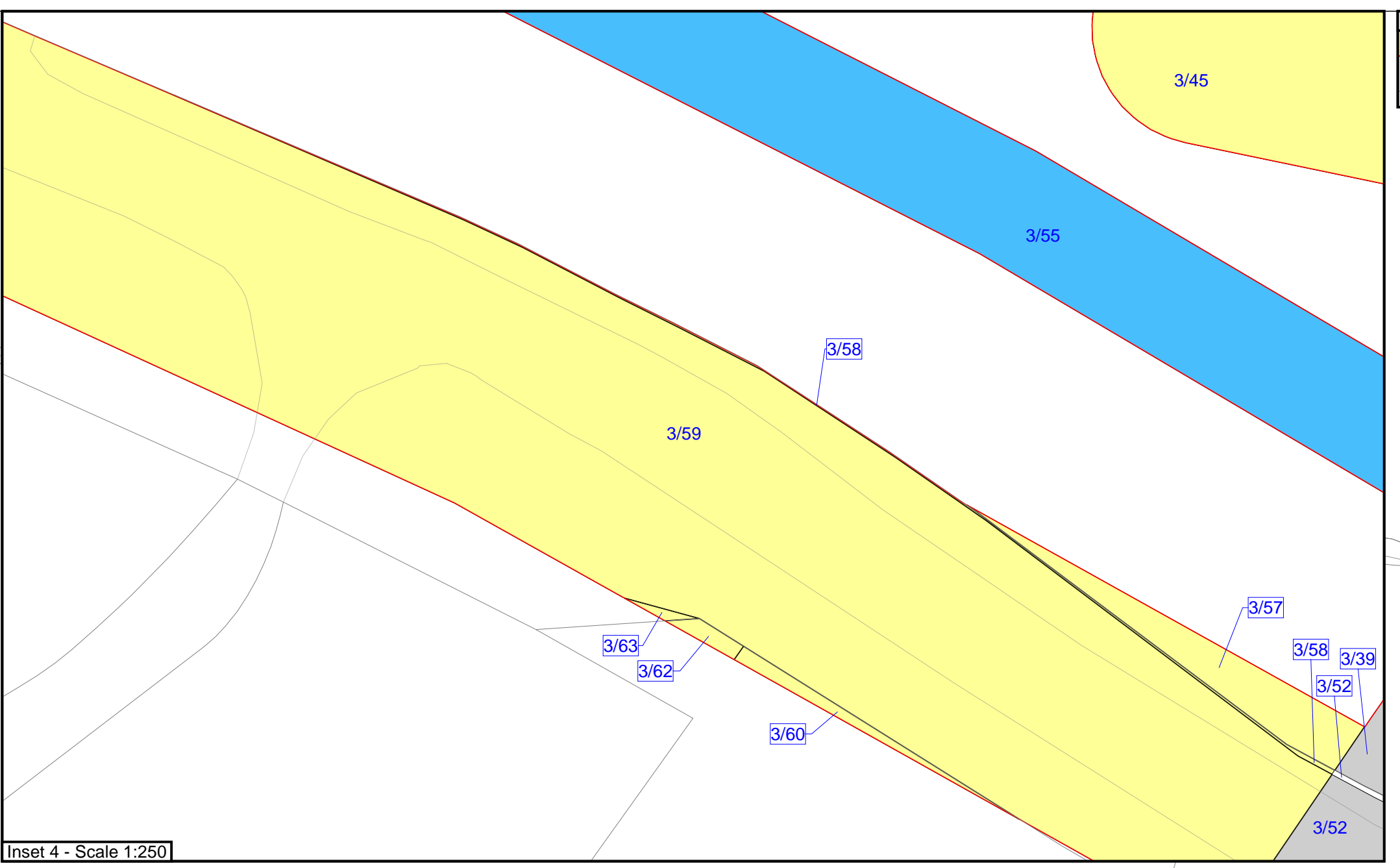
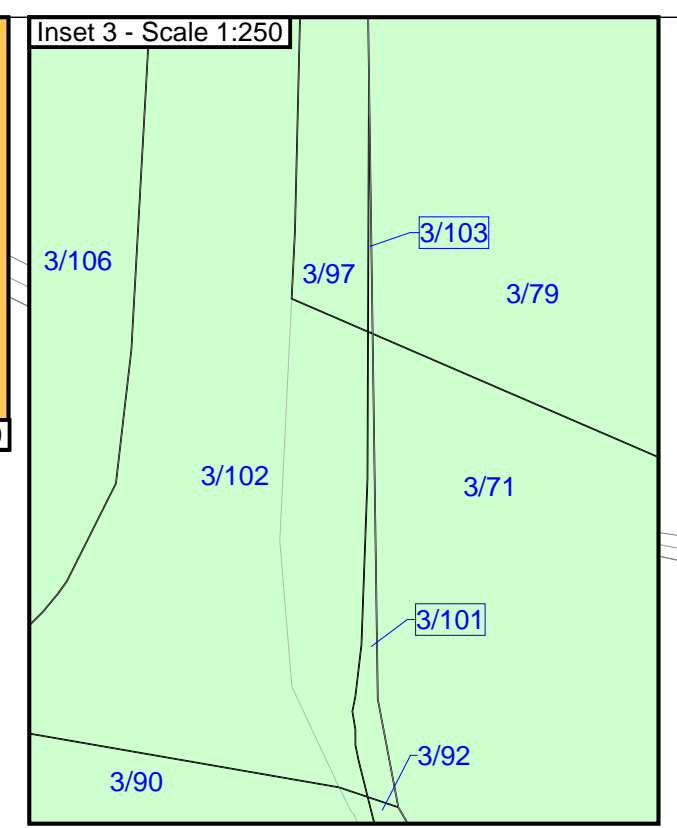
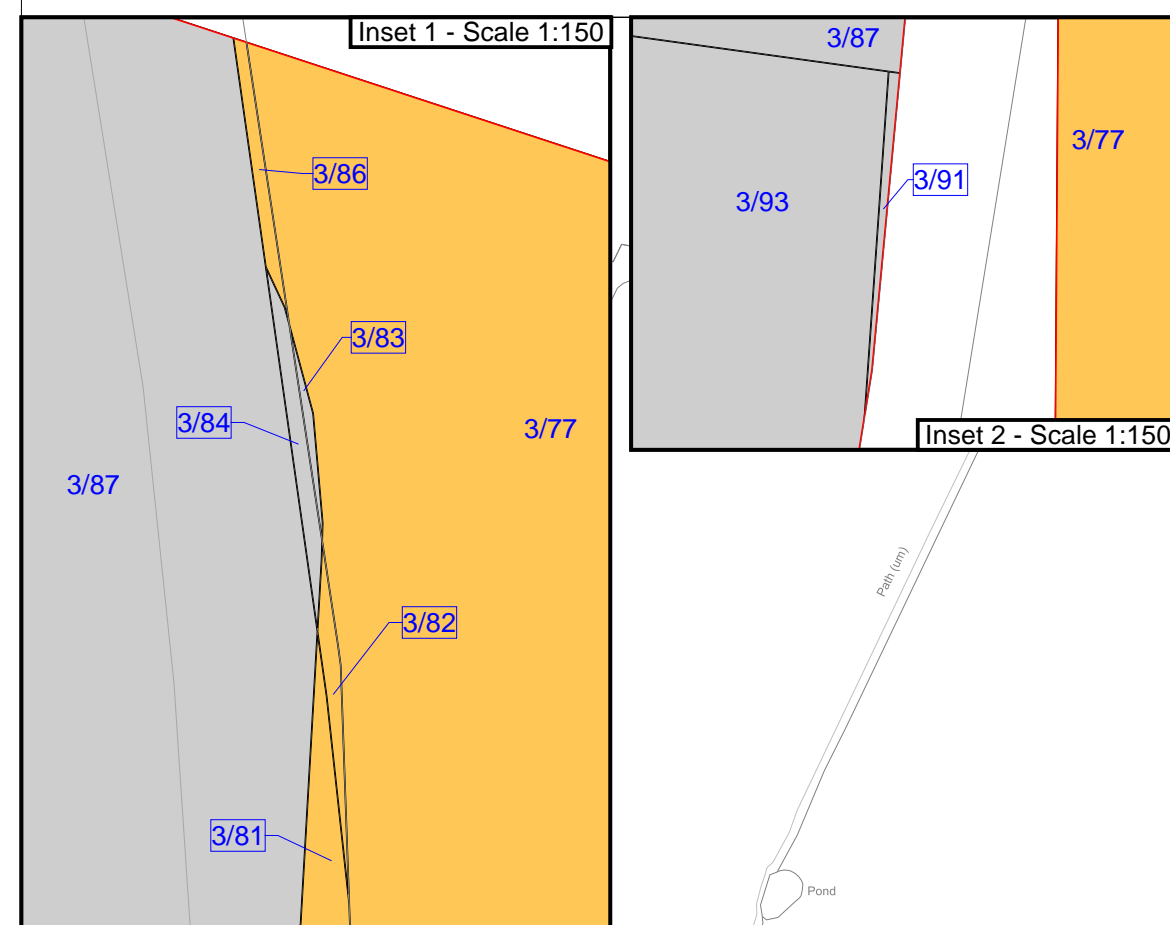
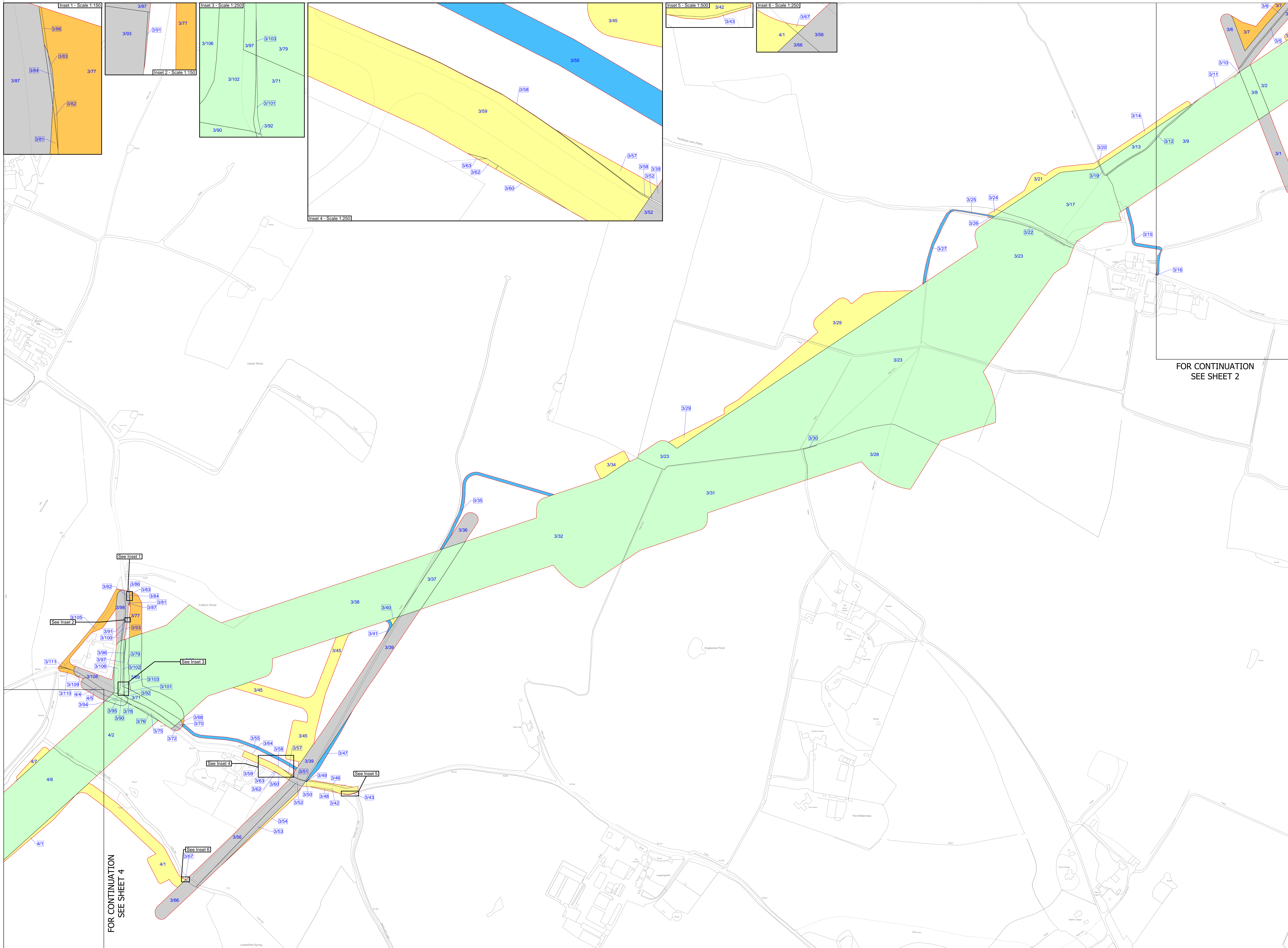


BACKGROUND MAPPING INFORMATION HAS BEEN REPRODUCED FROM THE ORDNANCE SURVEY BY PERMISSION OF ORDNANCE SURVEY OF THE CONTROLLER OF HIS MAJESTY'S STATIONERY OFFICE. © CROWN COPYRIGHT AND DATABASE RIGHTS (2025) LICENCE OS100024241 AND AC000087948.

Issue	Date	Remarks	Drawn	Checked	Approved
D	JUN-2026	For deadline five	CLJ	RCA	KPA
C	MAY-2026	For deadline four	CLJ	RCA	KPA
B	OCT-2025	October 2025 Update	BBU	AMI	CLJ
A	AUG-2025	For DCO Submission	BBU	CBE	CLJ

Title: THE NATIONAL GRID (NORWICH TO TILBURY) ORDER
 LAND PLANS
 REGULATION 5(2)(i)-(iii)
 SECTION E (SHEET 3 OF 8,
 BRAINTREE DISTRICT COUNCIL)

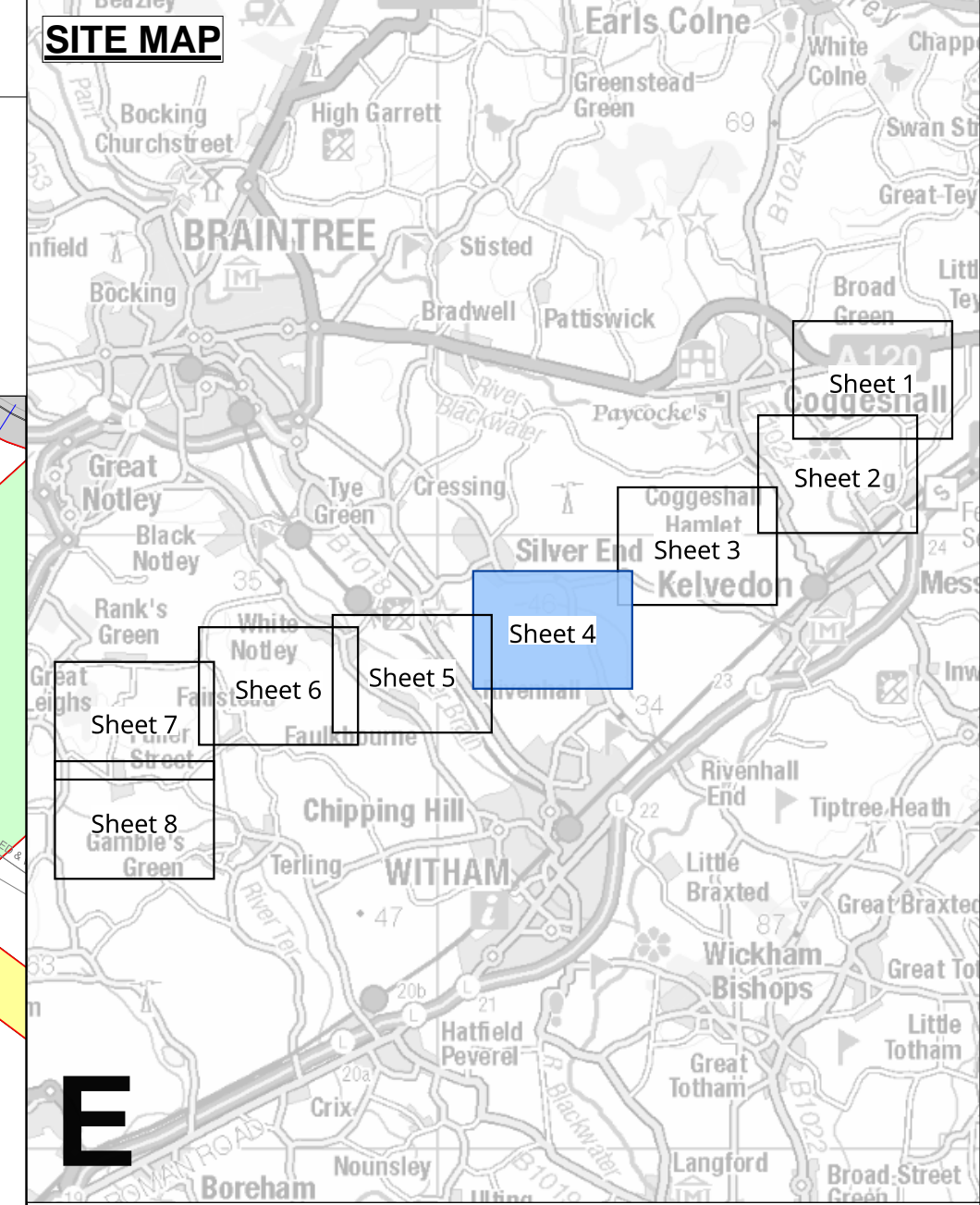
nationalgrid			
PINS Application Number	EN020027		
National Grid Drawing Reference			
AENC-TQST-LAN-DWG-0002			
Scale	Sheet Size	Sheet	Issue
1:2,500	A0	SHEET 3 of 8	D





THE NATIONAL GRID (NORWICH TO TILBURY) ORDER
 LAND PLANS
 REGULATION 5(2)(i)-(iii)
 SECTION E (SHEET 4 OF 8,
 BRAINTREE DISTRICT COUNCIL)

Application Document 2.2



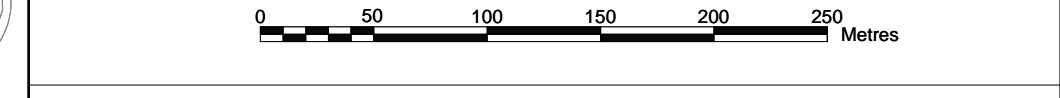
Legend

- Local authority boundary
- Section boundary & local authority boundary
- Section boundary
- Sheet index cutlines
- Order Limits
- Class 1 - Compulsory acquisition of land
- Class 2 - Compulsory acquisition of rights - Overhead line
- Class 3 - Compulsory acquisition of rights - Underground cable system
- Class 4 - Compulsory acquisition of rights - Overhead line and underground cable system
- Class 4A - Compulsory Acquisition of Rights - Works for the protection of existing UKOP apparatus affected by the authorised development
- Class 5 - Compulsory acquisition of rights - Access
- Class 6 - Compulsory acquisition of rights - Drainage
- Class 7 - Temporary use
- Class 8 - Land not subject to powers of acquisition nor temporary use

Notes

- For additional detail on the plan suites, please refer to the Guide to Plans (document reference 2.0), located in the Volume 2 of the DCO application.
- This drawing is scaled at paper size A0, therefore any prints taken at smaller sizes will affect accuracy of the measurement units and should not be scaled against.

Coordinate System: British National Grid
 Sheet X Centroid Coordinate: 581870 Sheet Y Centroid Coordinate: 218461

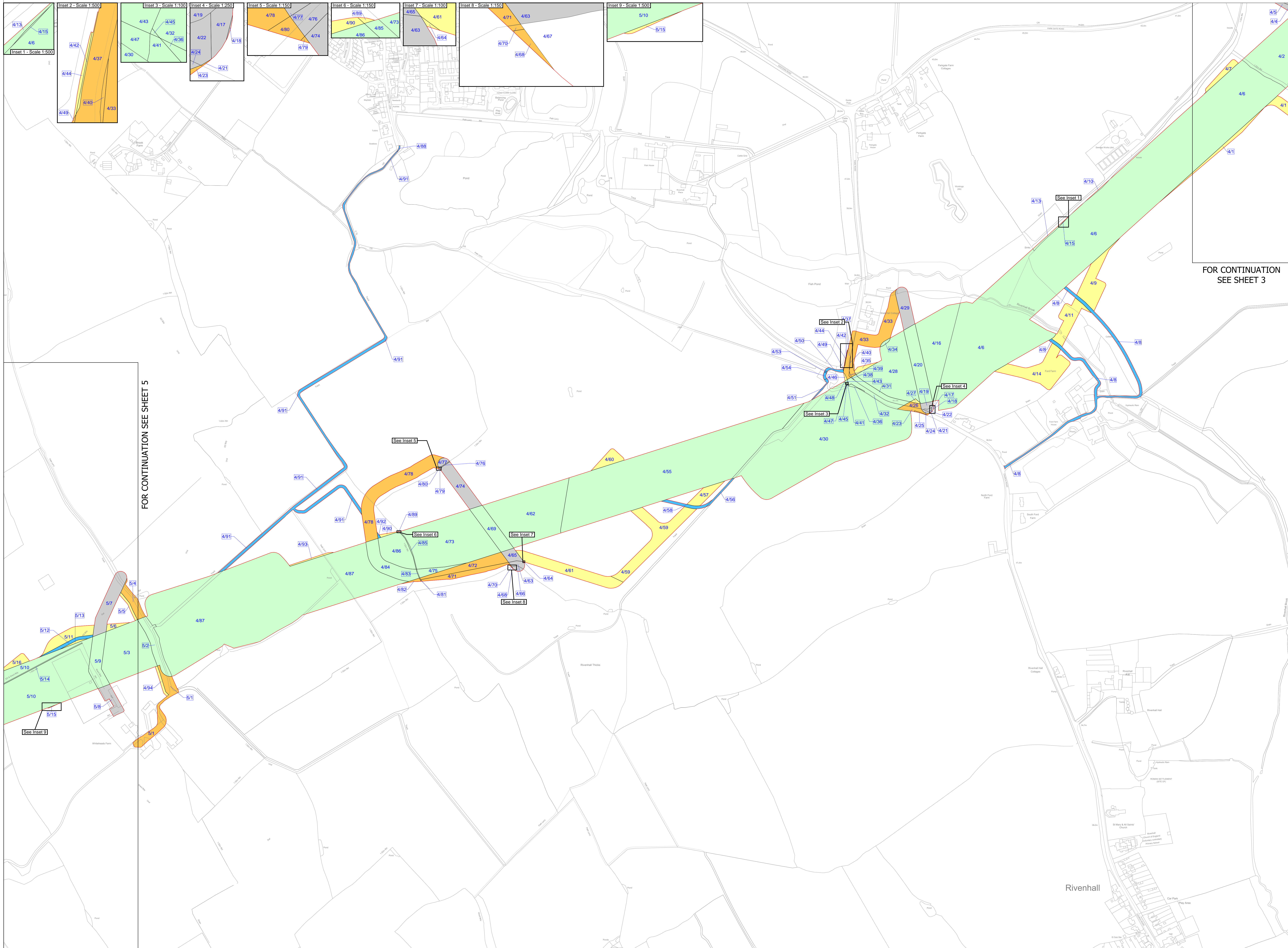


BACKGROUND MAPPING INFORMATION HAS BEEN REPRODUCED FROM THE ORDNANCE SURVEY BY PERMISSION OF ORDNANCE SURVEY OF THE CONTROLLER OF HIS MAJESTY'S STATIONERY OFFICE. © CROWN COPYRIGHT AND DATABASE RIGHTS (2025) LICENCE OS100024241 AND AC0000807948.

Issue	Date	Remarks	Drawn	Checked	Approved
D	JUN-2026	For deadline five	CLJ	RCA	KPA
C	MAY-2026	For deadline four	CLJ	RCA	KPA
B	OCT-2025	October 2025 Update	BBU	AMI	CLJ
A	AUG-2025	For DCO Submission	BBU	KGA	CLJ

Title:
 THE NATIONAL GRID (NORWICH TO TILBURY) ORDER
 LAND PLANS
 REGULATION 5(2)(i)-(iii)
 SECTION E (SHEET 4 OF 8,
 BRAINTREE DISTRICT COUNCIL)

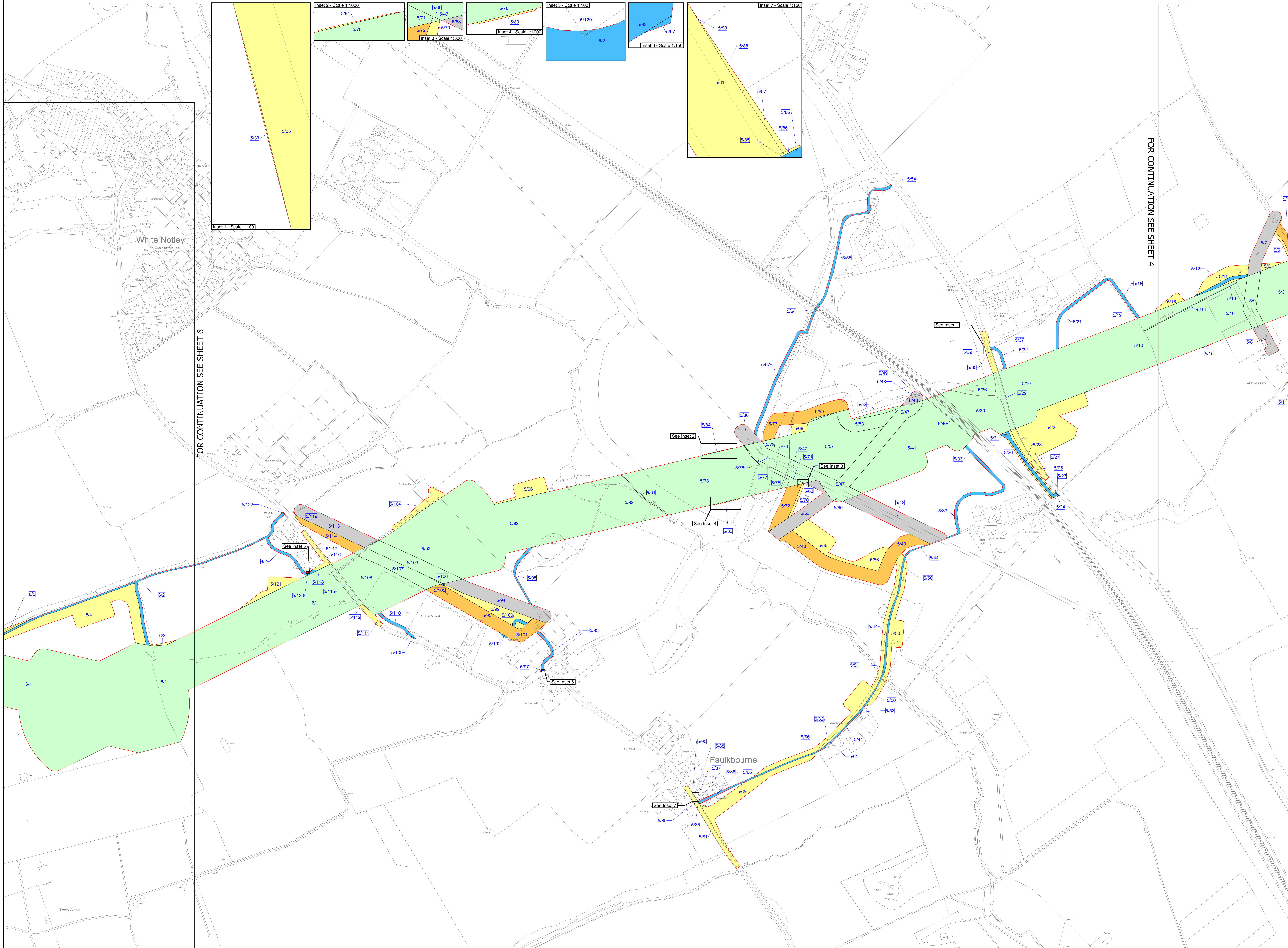
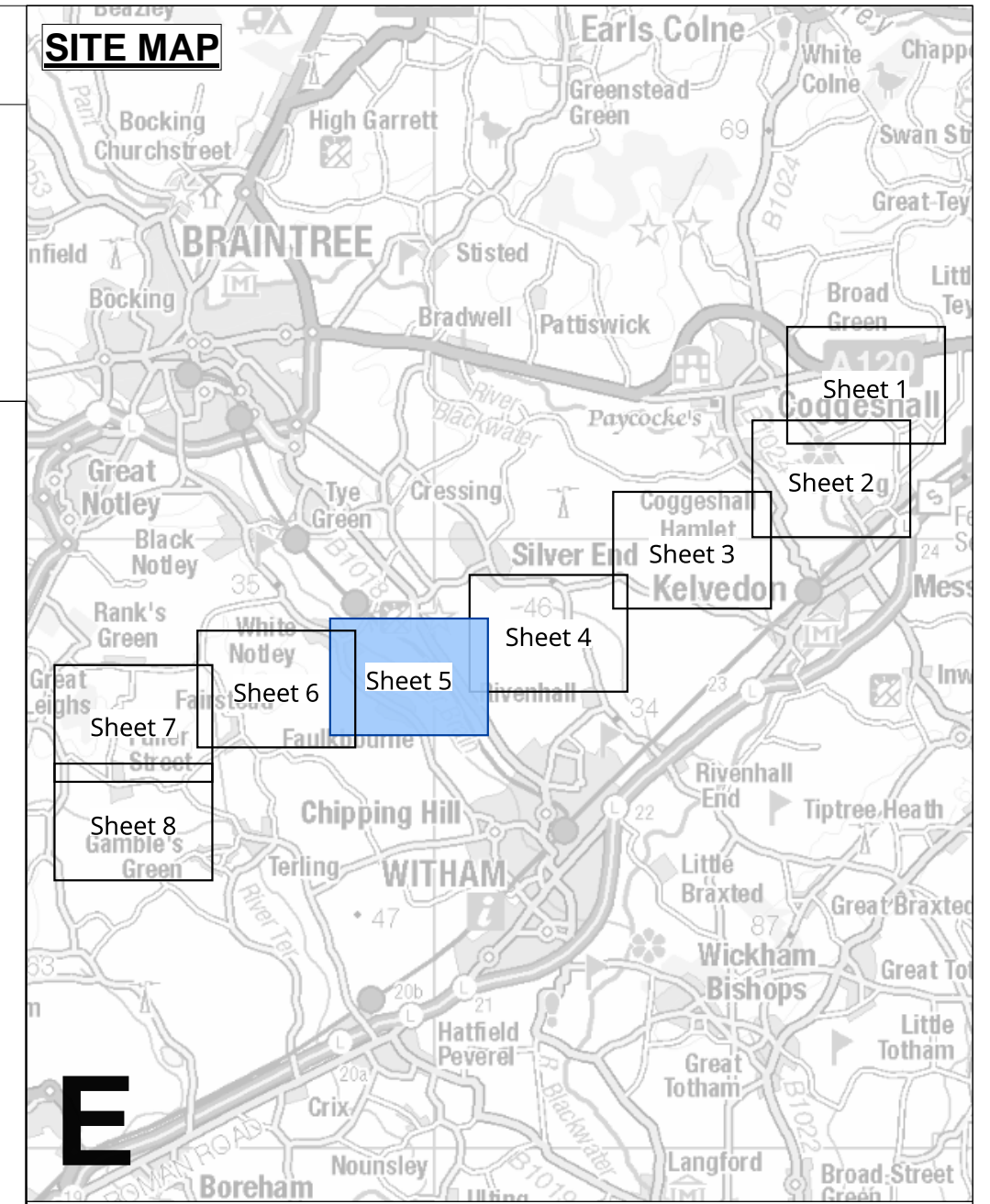
nationalgrid	
PINS Application Number	EN020027
National Grid Drawing Reference	
AENC-TQST-LAN-DWG-0002	
Scale	1:2,500
Sheet Size	A0
Sheet	SHEET 4 of 8
Issue	D





THE NATIONAL GRID (NORWICH TO TILBURY) ORDER
 LAND PLANS
 REGULATION 5(2)(i)-(iii)
 SECTION E (SHEET 5 OF 8,
 BRAINTREE DISTRICT COUNCIL)

Application Document 2.2



Legend

- Local authority boundary
- Section boundary & local authority boundary
- Section boundary
- Sheet index cutlines
- Order Limits
- Class 1 - Compulsory acquisition of land
- Class 2 - Compulsory acquisition of rights - Overhead line
- Class 3 - Compulsory acquisition of rights - Underground cable system
- Class 4 - Compulsory acquisition of rights - Overhead line and underground cable system
- Class 4A - Compulsory Acquisition of Rights - Works for the protection of existing UKOP apparatus affected by the authorised development
- Class 5 - Compulsory acquisition of rights - Access
- Class 6 - Compulsory acquisition of rights - Drainage
- Class 7 - Temporary use
- Class 8 - Land not subject to powers of acquisition nor temporary use

Notes

- For additional detail on the plan suites, please refer to the Guide to Plans (document reference 2.0), located in the Volume 2 of the DCO application.
- This drawing is scaled at paper size A0, therefore any prints taken at smaller sizes will affect accuracy of the measurement units and should not be scaled against.

Coordinate System: British National Grid
 Sheet X Centroid Coordinate: 579578 Sheet Y Centroid Coordinate: 217745

BACKGROUND MAPPING INFORMATION HAS BEEN REPRODUCED FROM THE ORDNANCE SURVEY BY PERMISSION OF ORDNANCE SURVEY OF THE CONTROLLER OF HIS MAJESTY'S STATIONERY OFFICE. © CROWN COPYRIGHT AND DATABASE RIGHTS (2025) LICENCE OS100024241 AND AC0000807948.

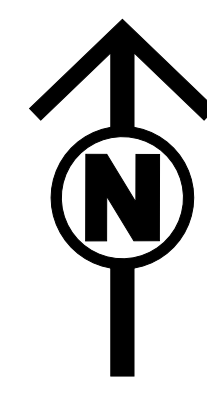
Issue	Date	Remarks	Drawn	Checked	Approved
D	JUN-2026	For deadline five	CLJ	RCA	KPA
C	MAY-2026	For deadline four	CLJ	RCA	KPA
B	OCT-2025	October 2025 Update	CBE	AMI	CLJ
A	AUG-2025	For DCO Submission	CBE	KGA	CLJ

Title:
 THE NATIONAL GRID (NORWICH TO TILBURY) ORDER
 LAND PLANS
 REGULATION 5(2)(i)-(iii)
 SECTION E (SHEET 5 OF 8,
 BRAINTREE DISTRICT COUNCIL)

nationalgrid

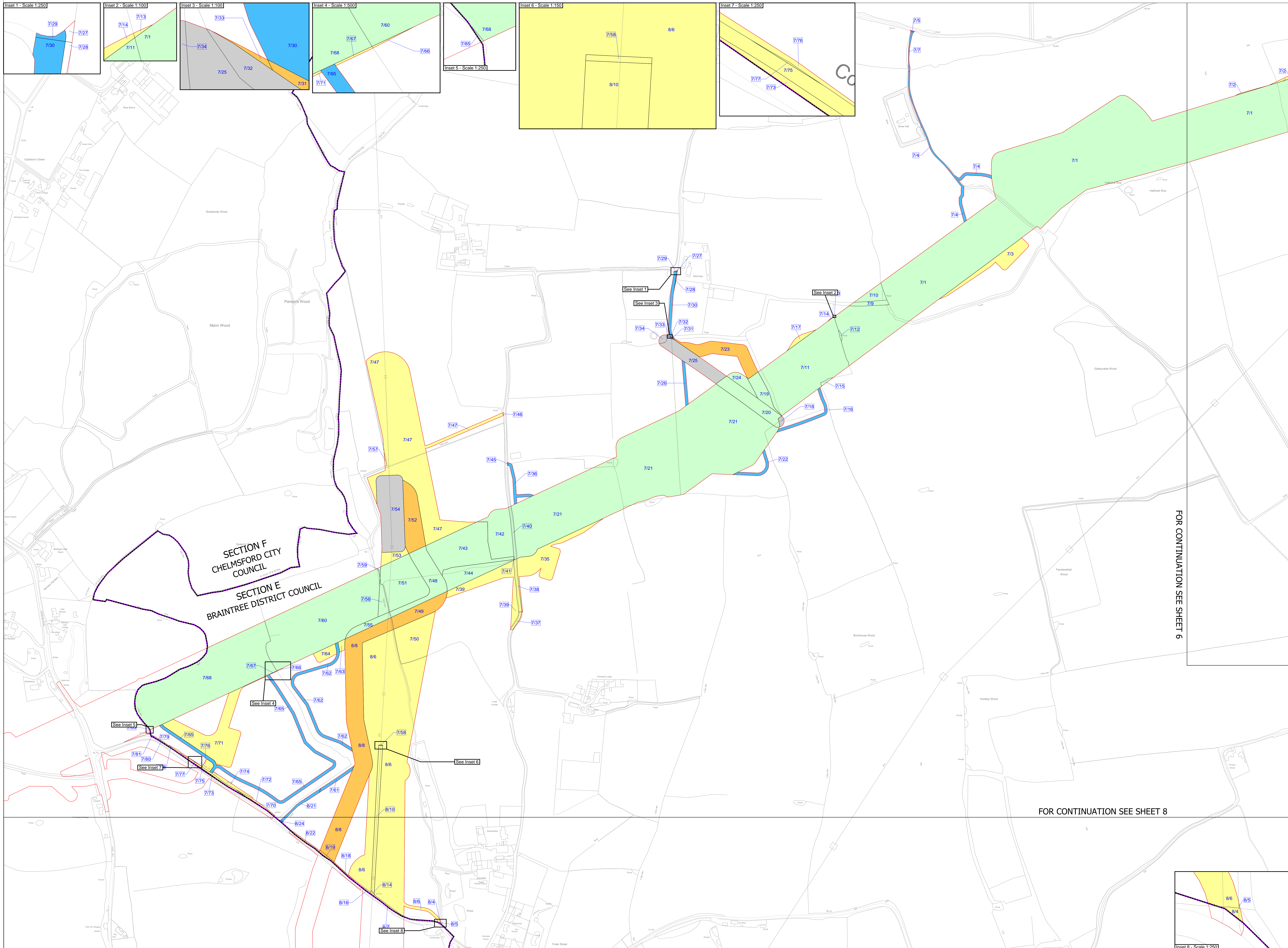
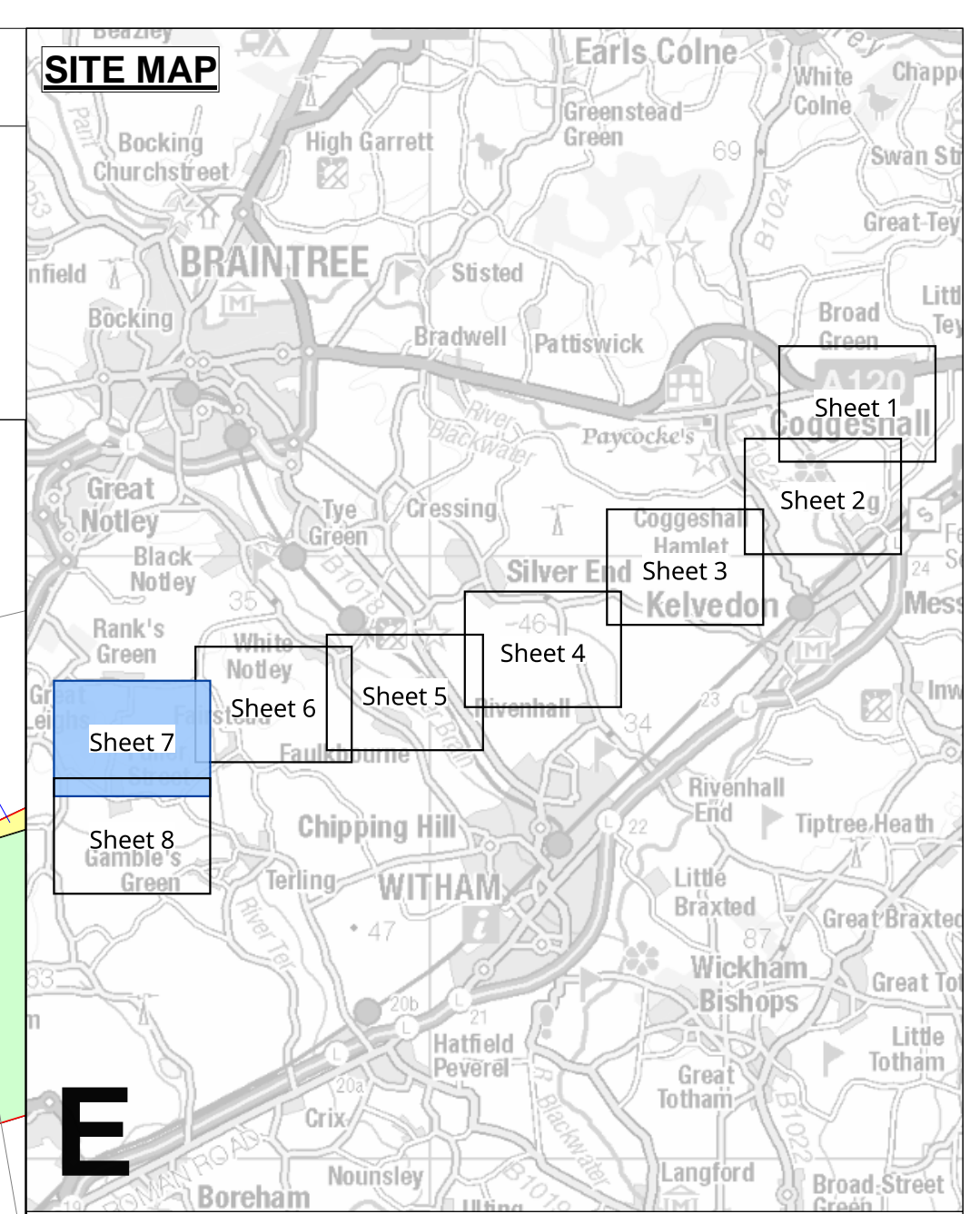
PINS Application Number: EN020027
 National Grid Drawing Reference: AENC-TQST-LAN-DWG-0002

Scale	Sheet Size	Sheet	Issue
1:2,500	A0	SHEET 5 of 8	D



THE NATIONAL GRID (NORWICH TO TILBURY) ORDER
 LAND PLANS
 REGULATION 5(2)(i)-(iii)
 SECTION E (SHEET 7 OF 8,
 BRAINTREE DISTRICT COUNCIL AND CHELMSFORD CITY COUNCIL)

Application Document 2.2



Legend

- Local authority boundary
- Section boundary & local authority boundary
- Section boundary
- Sheet index outlines
- Order Limits
- Class 1 - Compulsory acquisition of land
- Class 2 - Compulsory acquisition of rights - Overhead line
- Class 3 - Compulsory acquisition of rights - Underground cable system
- Class 4 - Compulsory acquisition of rights - Overhead line and underground cable system
- Class 4A - Compulsory Acquisition of Rights - Works for the protection of existing UKOP apparatus affected by the authorised development
- Class 5 - Compulsory acquisition of rights - Access
- Class 6 - Compulsory acquisition of rights - Drainage
- Class 7 - Temporary use
- Class 8 - Land not subject to powers of acquisition nor temporary use

Notes

- For additional detail on the plan suites, please refer to the Guide to Plans (document reference 2.0), located in the Volume 2 of the DCO application.
- This drawing is scaled at paper size A0, therefore any prints taken at smaller sizes will affect accuracy of the measurement units and should not be scaled against.

Coordinate System: British National Grid
 Sheet X Centroid Coordinate: 575048 Sheet Y Centroid Coordinate: 216980

BACKGROUND MAPPING INFORMATION HAS BEEN REPRODUCED FROM THE ORDNANCE SURVEY BY PERMISSION OF ORDNANCE SURVEY OF THE CONTROLLER OF HIS MAJESTY'S STATIONERY OFFICE. © CROWN COPYRIGHT AND DATABASE RIGHTS (2025) LICENCE OS100024241 AND AC0000807948.

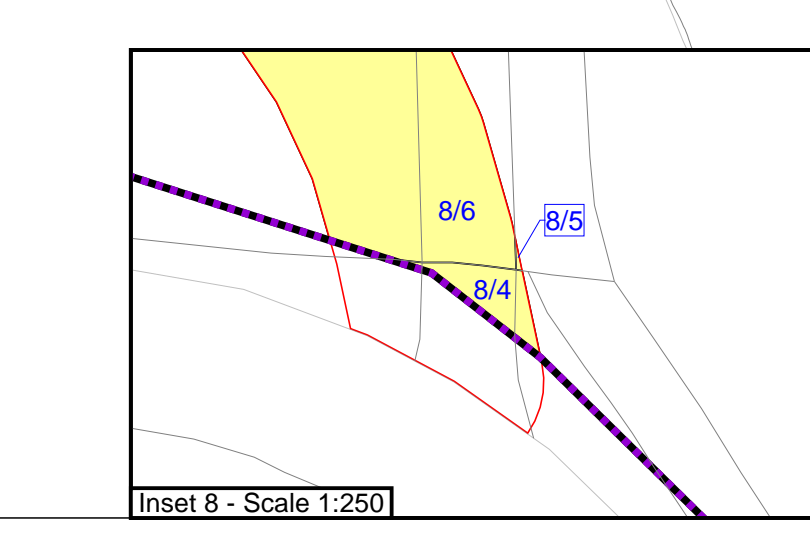
Issue	Date	Remarks	Drawn	Checked	Approved
D	JUN-2026	For deadline five	CLJ	RCA	KPA
C	MAY-2026	For deadline four	CLJ	RCA	KPA
B	OCT-2025	October 2025 Update	CBE	AMI	CLJ
A	AUG-2025	For DCO Submission	CBE	KGA	CLJ

Title:
 THE NATIONAL GRID (NORWICH TO TILBURY) ORDER
 LAND PLANS
 REGULATION 5(2)(i)-(iii)
 SECTION E (SHEET 7 OF 8
 BRAINTREE DISTRICT COUNCIL
 AND CHELMSFORD CITY COUNCIL)

nationalgrid			
PINS Application Number	EN020027		
National Grid Drawing Reference			
AENC-TQST-LAN-DWG-0002			
Scale	Sheet Size	Sheet	Issue
1:2,500	A0	SHEET 7 of 8	D

FOR CONTINUATION SEE SHEET 6

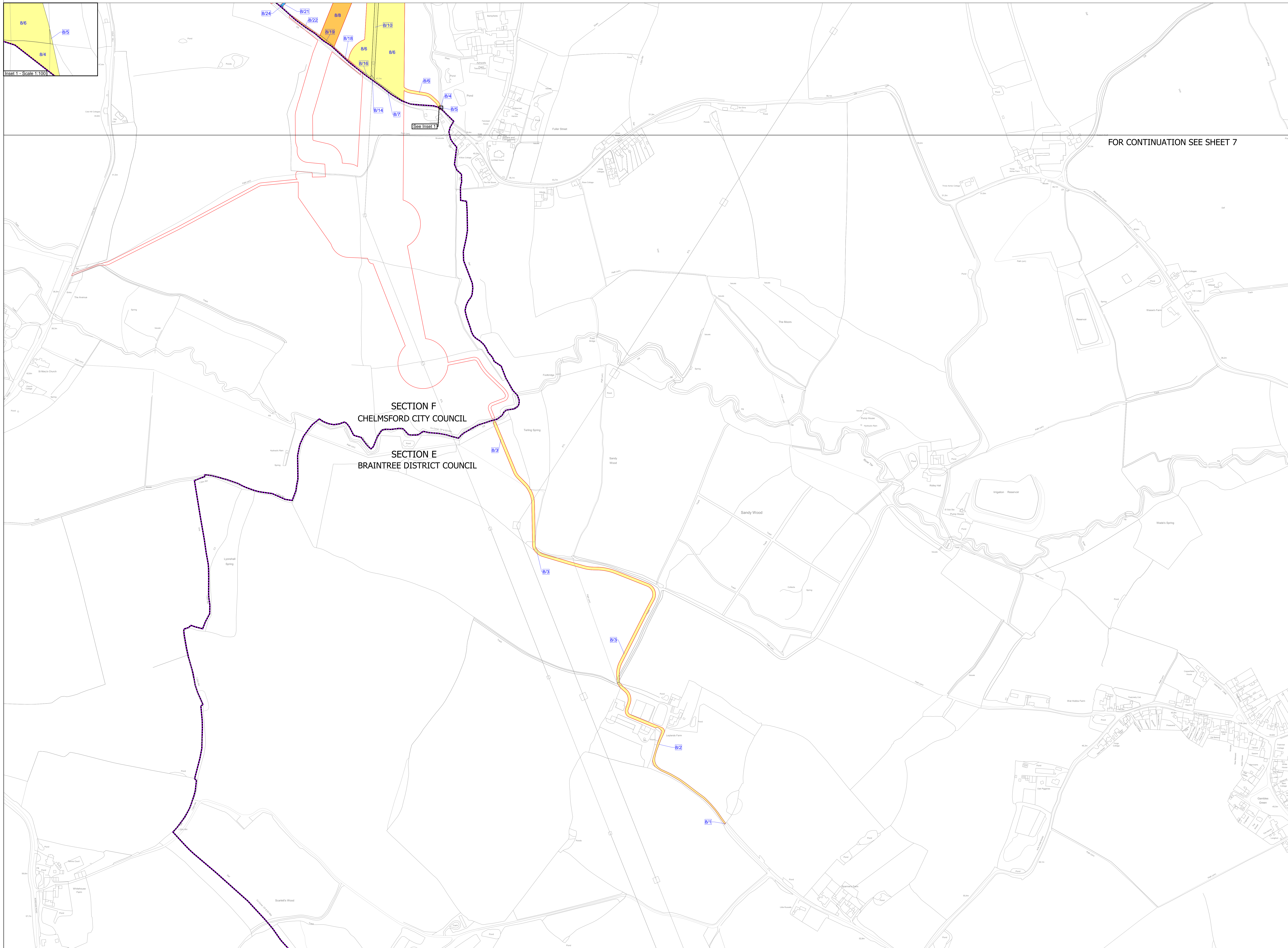
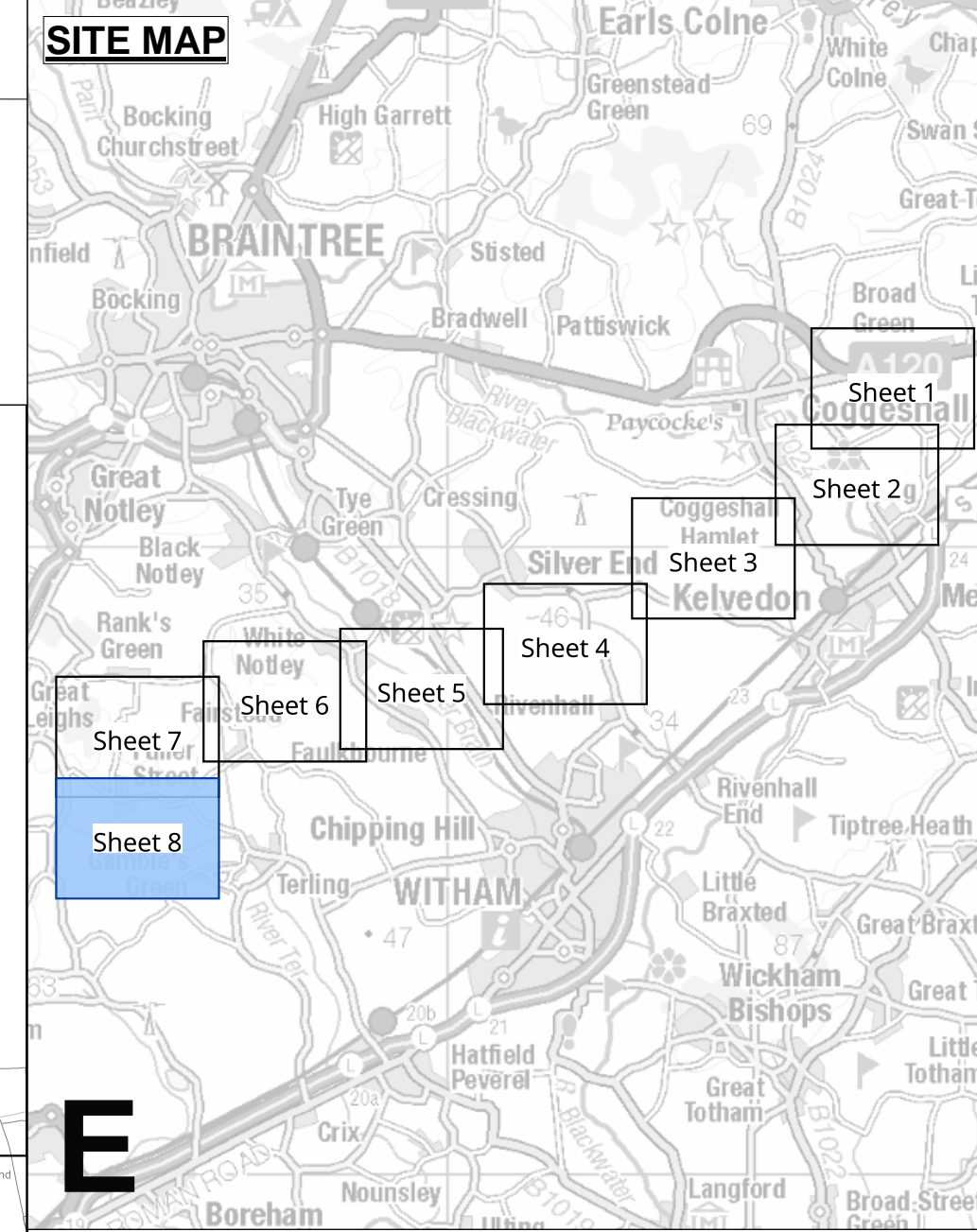
FOR CONTINUATION SEE SHEET 8





THE NATIONAL GRID (NORWICH TO TILBURY) ORDER
 LAND PLANS
 REGULATION 5(2)(i)-(iii)
 SECTION E (SHEET 8 OF 8,
 BRAINTREE DISTRICT COUNCIL AND CHELMSFORD CITY COUNCIL)

Application Document 2.2



FOR CONTINUATION SEE SHEET 7

Inset 1 - Scale 1:100

Legend

- Local authority boundary
- Section boundary & local authority boundary
- Section boundary
- Sheet index outlines
- Order Limits
- Class 1 - Compulsory acquisition of land
- Class 2 - Compulsory acquisition of rights - Overhead line
- Class 3 - Compulsory acquisition of rights - Underground cable system
- Class 4 - Compulsory acquisition of rights - Overhead line and underground cable system
- Class 4A - Compulsory Acquisition of Rights - Works for the protection of existing UKOP apparatus affected by the authorised development
- Class 5 - Compulsory acquisition of rights - Access
- Class 6 - Compulsory acquisition of rights - Drainage
- Class 7 - Temporary use
- Class 8 - Land not subject to powers of acquisition nor temporary use

Notes

- For additional detail on the plan suites, please refer to the Guide to Plans (document reference 2.0), located in the Volume 2 of the DCO application.
- This drawing is scaled at paper size A0, therefore any prints taken at smaller sizes will affect accuracy of the measurement units and should not be scaled against.

Coordinate System: British National Grid
 Sheet X Centroid Coordinate: 575048 Sheet Y Centroid Coordinate: 215361

BACKGROUND MAPPING INFORMATION HAS BEEN REPRODUCED FROM THE ORDNANCE SURVEY BY PERMISSION OF ORDNANCE SURVEY OF THE CONTROLLER OF HIS MAJESTY'S STATIONERY OFFICE. © CROWN COPYRIGHT AND DATABASE RIGHTS (2025) LICENCE OS100024241 AND AC0000807948.

Issue	Date	Remarks	Drawn	Checked	Approved
D	JUN-2026	For deadline five	CLJ	RCA	KPA
C	MAY-2026	For deadline four	CLJ	RCA	KPA
B	OCT-2025	October 2025 Update	CBE	AMI	CLJ
A	AUG-2025	For DCO Submission	CBE	KGA	CLJ

Title:
 THE NATIONAL GRID (NORWICH TO TILBURY) ORDER
 LAND PLANS
 REGULATION 5(2)(i)-(iii)
 SECTION E (SHEET 8 OF 8
 BRAINTREE DISTRICT COUNCIL
 AND CHELMSFORD CITY COUNCIL)

nationalgrid

PINS Application Number: EN020027

National Grid Drawing Reference: AENC-TQST-LAN-DWG-0002

Scale	Sheet Size	Sheet	Issue
1:2,500	A0	SHEET 8 of 8	D

National Grid plc
National Grid House,
Warwick Technology Park,
Gallows Hill, Warwick.
CV34 6DA United Kingdom

Registered in England and Wales
No. 4031152
nationalgrid.com